

STANLEY

®

Bifolding SB600 Door Series

- HEAVY DUTY PIVOTS
- LEAD EDGE FINGER GUARD
- LAMINATE LOCK / FLUSH BOLTS
- REDUNDANT SAFETY SENSORS
- ADVANCED ACTIVATION SENSORS
- TWO- AND FOUR-PANELS
- OPENING WIDTHS FROM 4' TO 10'



DOOR PANELS FOLD IN OR OUT FOR THE MOST EFFICIENT USE OF SPACE AT ENTRANCES OR EXITS.

The SB600 Series Automatic Bifolding Door is a proven retrofit solution.

Full door automation for two-way traffic where manual swing doors reside today.

The Bifold has two-panel and four-panel configurations with a variety of opening widths from 4 to 10 feet.

The door panels fold into the vestibule and do not occupy floor space within the interior nor require safety rails on the exterior.

Stanley Automatic Door Systems - the safest, most cost effective solutions available today.

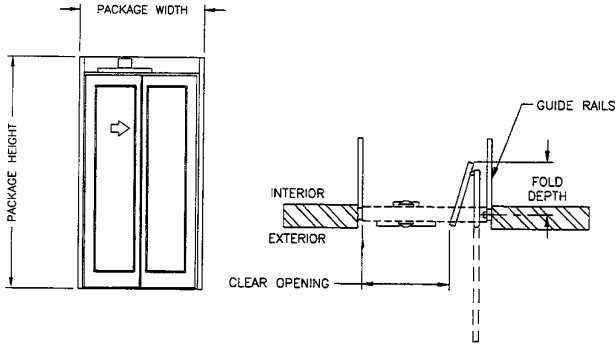
STANLEY

MAKE SOMETHING GREAT™

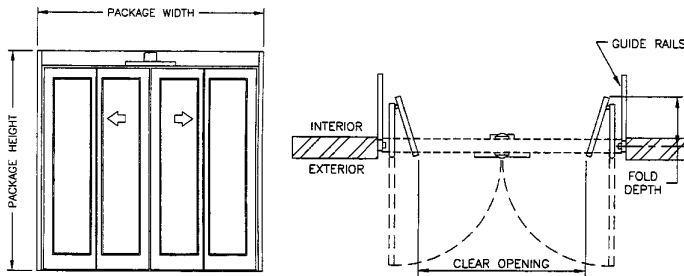
STANLEY®

Bifolding SB600 Door Series

2 PANEL



4 PANEL



DOOR PACKAGES ARE CUSTOM MANUFACTURED TO FIT YOUR JOB REQUIREMENTS

HEIGHT: 2 Panel: 7'-6" (2.2m) minimum, 8'-6" (2.6m) maximum

4 Panel: 7'-6" (2.2m) minimum, 9'-2" (2.8m) maximum

WIDTH: 2 Panel: 4' (1.2m) minimum, 5'-2" (1.6m) maximum

4 Panel: 6' (1.8m) minimum, 10' (3m) maximum

TYPICAL DOOR PANEL WEIGHT: up to 100 pounds each (45kg)

DRIVE SYSTEM: Stanley Magic-Force Swing Door Operator

CONTROLLER: microprocessor based,

safety logic, watchdog LED

SENSORS:

2 SU-100 motion sensors,

1 Stan-Guard® (non-fold side),

1 infrared presence sensor

(fold side) for safety

BREAKOUT:

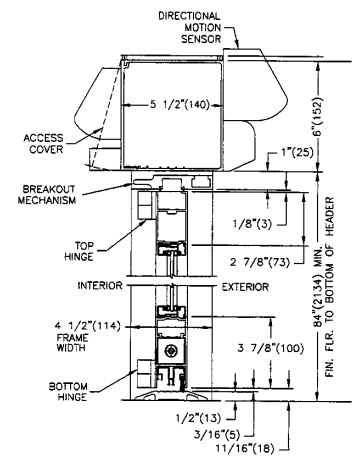
all panels

POWER REQUIRED:

120 VAC, 5 amps min.

CODE COMPLIANCE:

UL, cUL, ANSI A156.10

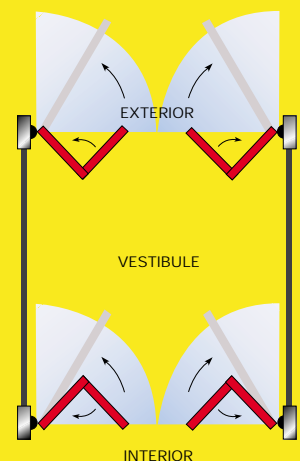


FEATURES & BENEFITS

- About 70% of our bifolding door's package size remains free and clear for passage — a real advantage in tight spaces that require automatic doors.
- Door panels fold in or out for the most efficient use of space at entrances or exits.
- SB600 is a proven retrofit solution to give an owner full door automation for two-way traffic where manual swing doors reside today.
- Two-panel and four-panel configurations with a variety of opening widths from 4 to 10 feet.
- The folding action of the bifolding doors does not occupy valuable floor space on the interior side of the building or require permanent rails on the exterior side of the building.

- Heavy Duty Pivots
- Floating Lead Edge Finger Guard
- Laminate Lock with Flush Bolts
- Dual Redundant Safety Sensors
- Advanced Activation Sensors

Our door panels fold in or out for the most efficient use of space at entrances or exits.



CUSTOMER CARE: 1-800-7-ACCESS (1-800-722-2377)

STANLEY®

MAKE SOMETHING GREAT™

The Stanley Works
Access Technologies Product Group
Customer Care: 1-800-7-ACCESS (1-800-722-2377)
<http://www.stanleyworks.com>